

OPTICAL HIGH SPEED SCANNING

WENZEL CORE D

Measurement at the speed of light



FAST OPTICAL MEASUREMENT
AT PRODUCTION CYCLE SPEED

WENZEL CORE D

OPTICAL MEASUREMENT AT PRODUCTION CYCLE SPEED

Designed to increase the speed of the production process, the CORE Optical High Speed Scanning System offers a highly flexible 3D inspection solution for demanding measurement requirements in global manufacturing. The CORE is based on a proven mechanical structure, developed and manufactured in WENZEL's

renowned production facility in Germany. This forms the cornerstone for its accuracy, reliability and quality. With a scanning speed of up to 400 mm/s, the CORE provides time savings by a factor of about 4 compared to tactile coordinate measuring machines.

FEATURES

- **For automated measurement** of components in-line or at-line is the CORE the optimal solution
- **Robust construction** ensures its use in production environment
- **Fully integrated optical sensors** measure complex workpiece geometries in a reasonable time
- **Possibility of tactile measurement** when optical methods reach their physical limits
- **Automatic change between tactile and optical measurement** by the PST hybrid sensor

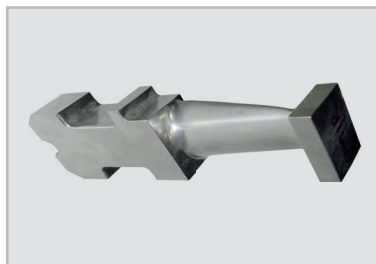
FIELDS OF APPLICATION

Typical applications of CORE can be found in a wide variety of industries, for example in tool and mold making, prototype construction, the automotive industry, reverse engineering and above all in medical technology and aviation. CORE is used to measure turbine blades, joints, implants and vehicle parts.

Knee and hip prostheses

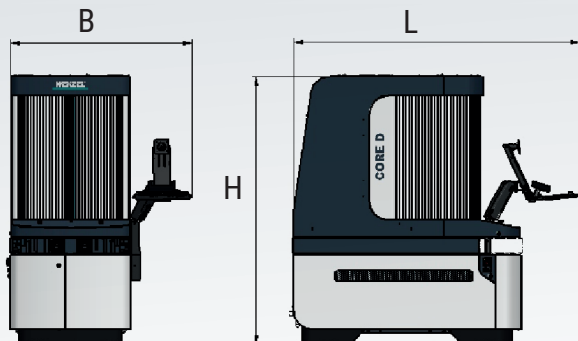


Turbine blades



Pump





MACHINE PROFILE

Space Requirements (L x B x H)	2255 x 1500 x 2100 mm
Machine weight	1500 kg
Acceleration	> 3000 mm/s ²
Measurement system resolution	0,1 µm

YOUR ADVANTAGES AT A GLANCE

■ Fast and efficient

Fast point detection | Minimization of machine movement | Repositioning during measurement

■ Easy integration

Compact design with a small footprint | Controller and computer integrated in the unit | Accessible work area | Optional protective hood for difficult environmental conditions | No compressed air required | Portable machine type

■ Unique sensors

Simple measurement of critical areas | Direct measurement of polished and highly reflective surfaces | Large working distance and measuring range

■ Latest technology

Can be automated | Connection of robots for assembly | Temperature stability from 18°C - 30°C | Dirt-resistant due to protected guides | Vibration-resistant | Use of precision scales | 6-axis measuring system | Angle acceptance of the sensors of 90° ±85°

INNOVATION MEETS TRADITION

The WENZEL Group is a market leader in innovative Metrology. WENZEL offers a comprehensive product portfolio in the fields of Coordinate Metrology, Computed Tomography and Optical High Speed Scanning. The technology of WENZEL is used in all industries, including the automotive sector, aeronautics, power generation and

medicine. WENZEL looks at today on an installed base of more than 10,000 machines worldwide. Subsidiaries and agencies in more than 50 countries support sales and provide after-sales service for our customers. The WENZEL Group today employs more than 600 people.



YOUR LOCAL CONTACT PERSON

WENZEL GROUP GMBH & CO. KG

Werner-Wenzel-Straße

97859 Wiesthal

Phone: +49 6020 201-6006

E-Mail: sales@wenzel-group.com

We are there for you worldwide. You can find our subsidiaries, sales and service partners at **www.wenzel-group.com**.

