

Smart CMM

Simply smart and intelligent



Smart CMM

Ergonomic, fast, compact

A small revolution in coordinate metrology – made by Wenzel.

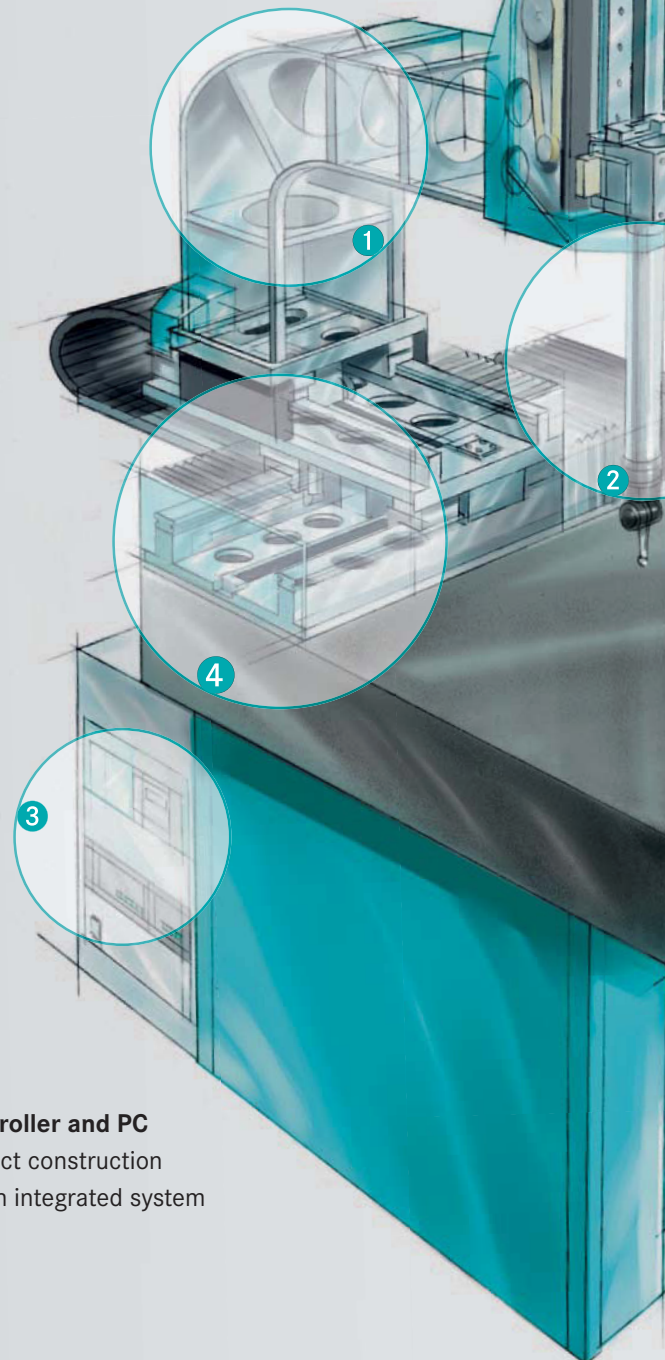
- Shop-floor 3-D measuring device for measuring small and medium-sized components
- Intelligent and compact design for a large application range
- All guideways protected/enclosed for use even in rough environments

- Only an electricity outlet required (no air bearing)
- The measuring volume is freely accessible from 3 sides
- Flexible use through high temperature tolerance



1 Light-weight

Outstanding kinematics due to ultra light-weight construction (FEM design strain-optimized)



3 Controller and PC

Compact construction through integrated system

The optimized software solution

Measuring under Control

Our user-orientated software solution

- Ergonomic, graphic user surface
- Simple and clear instructions for use
- 1-Click-CNC-Measuring through speed loading window

1-Click - CNC

2Z Column

- Made of carbon fibre
- Flexible adjusting for used probe sizes, therefore no measuring range wasted



4 Precision linear guideways

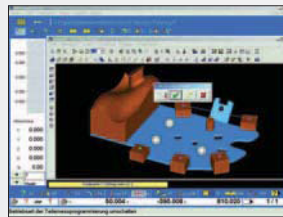
- High life expectancy
- Low maintenance
- No air supply required

Big gap between bearings

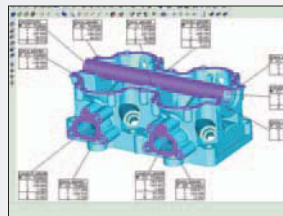
- Stable and precise guideways

Carbon fibre as carrier material

- Stable in temperature



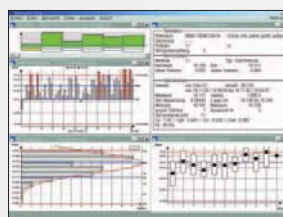
Click 'n Measure
Measuring automatism
incl. of collision check



Graphic measuring
protocol with configurable
point boxes



Automatic call of measu-
ring programs through
speed loading window



Freely configurable statistics:
Overview, trend diagrams,
rule cards, histograms, pro-
cess capability and more

Technical characteristics

mm

X	Y	Z
500	450	400
1000	450	400

Measuring uncertainty according to DIN EN ISO 10360 - 2

Temperature range 16-28°C, max 2 K/h

MPE_E [µm]: 4,5 + L/250 (L in mm)

MPE_P [µm]: 4,5

Temperature range 18-22°C, max 1 K/h

MPE_E [µm]: 3,5 + L/300 (L in mm)

MPE_P [µm]: 3,5

Kinematics:

v_{max} 650 mm/s

a_{max} 2000 mm/s²

Specified measuring uncertainty with TP200 probing.

We are there for you

Wenzel worldwide

Today, Wenzel is the largest and most successful, family owned and operated company in the world in the field of coordinate measuring technology; it has branches in Switzerland, France, the Netherlands, England, the USA, China and Singapore. Sales and service

partners take care of Wenzel customers in more than 50 countries around the globe. Wenzel are a Global Player employing more than 440 people worldwide and supplying more than 500 precision measuring machines annually – the future looks upbeat.

And, by the way, that's no reason to rest on our laurels: We consistently push our global activities and with a long-term strategic direction in mind – if you're going to do something, do it right; typical Wenzel ...

WENZEL Präzision GmbH
D-97859 Wiesthal
Phone: +49 6020 201-0
Fax: +49 6020 201-1999
info@wenzel-cmm.com
www.wenzel-group.com

WENZEL GearTec GmbH
D-76135 Karlsruhe
Phone: +49 721 170 87-0
Fax: +49 721 170 87-200
info@wenzel-geartec.de
www.wenzel-geartec.de

WENZEL Metromec AG
CH-7007 Chur
Phone: +41 81 257 07-00
Fax: +41 81 257 07-01
metromec@metromec.ch
www.metromec.ch

WENZEL UK Ltd.
United Kingdom
Phone: +44 1452 7282-98
Fax: +44 1452 7282-88
info@uk.wenzel-cmm.com
www.wenzel-group.com

WENZEL France SAS
F-94373 SUCY EN BRIE
Phone: +33 1 49 82 06-20
Fax: +33 1 49 82 08-40
info@france.wenzel-cmm.com
www.wenzel-group.com

WENZEL WKP B.V.
NL-6422 PC Heerlen
Phone: +31 455 66 00-66
Fax: +31 455 41 74-90
info@wenzel-wkp.nl
www.wenzel-wkp.nl

WENZEL Xspect Solutions Inc.
USA-Wixom, MI 48393
Phone: +1 248 596 11-93
Fax: +1 248 596 11-94
inquiries@xspectsolutions.com
www.xspectsolutions.com

WENZEL Measuring Machines (Shanghai) Co. Ltd.
P. R. China
Phone: +86 21 5970 3088
Fax: +86 21 5970 3082
www.wenzel-group.com

WENZEL Asia Pacific Pte
Singapore
sales@asia.wenzel-cmm.com
www.wenzel-group.com



Bavarian state prize for quality and quality management



DIN EN ISO 9001, VDA 6.4



TOP 100 of German medium-sized companies